

***Hobart Airport  
Quality of Service Report  
January 2016 to March 2016***

This report provides quality of service information relating to the passenger terminal and airport services provided at Hobart Airport during January to March 2016 (inclusive).

This report is structured around four sections, namely:

- I. Summary of customer feedback
- II. Summary of customer satisfaction survey
- III. Handling of complaints; and
- IV. Notifiable quality of service issues.

Information for this report is sourced directly from two areas

- 1) *Customer Complaint Summary* - The actual complaints received by Hobart Airport through email, the website or phone. During this period Hobart International Airport passengers and received 8 customer complaints.
- 2) *Customer Satisfaction Survey* - This report sees the introduction of the Customer Satisfaction Survey for Hobart Airport. This quarterly survey questions passengers while in the Airport terminal about their experience at Hobart Airport. Overtime this information will provide a trend line of satisfaction levels at Hobart Airport and be used by management to best meet customer requirements.

***Customer Complaint summary***

The top three areas for improvement based on actual customer complaints received over the period are listed below with relevant detail and Hobart Airport's response. *(Noting the small number of complaints from which this data has been drawn 22 during this period.)*

**1. Transportation**

There were five complaints regarding taxi services and the drop/pick up area. The matters regarding taxis related to short fares, this has been addressed with the introduction of a short fare system at Hobart Airport.

**2. Security Screening**

There were four complaints regarding security screening, 3 regarding objects that were not allowed through security screening.

## 2. Departure Lounge

Three complaints were received about crowding in the departure lounge. The planning for the departure lounge project is continuing.

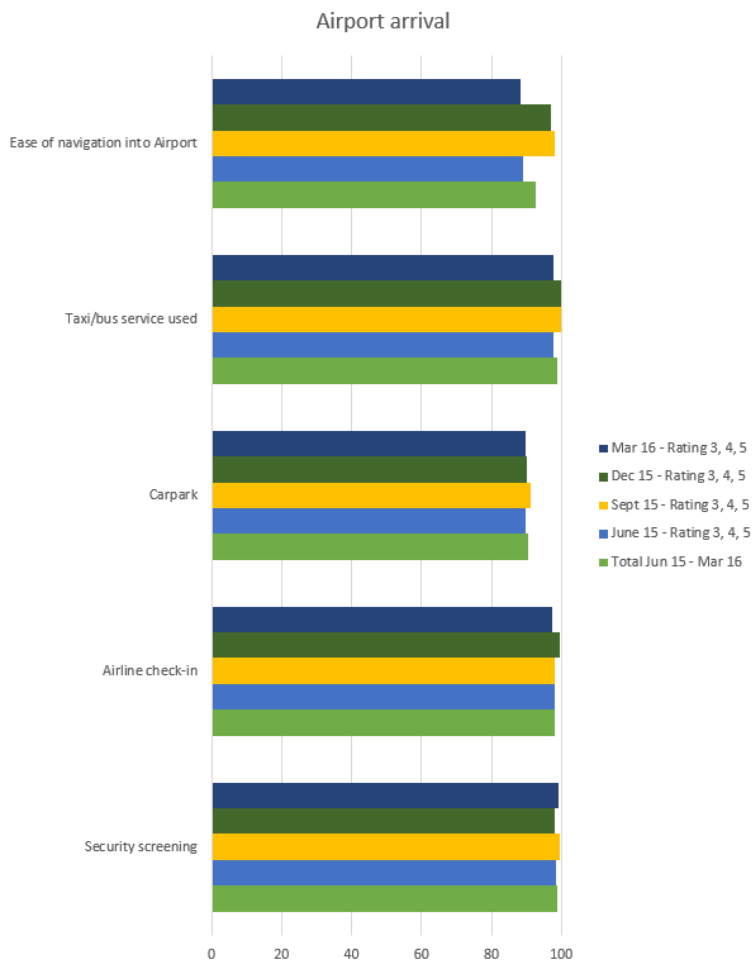
### Key indicators

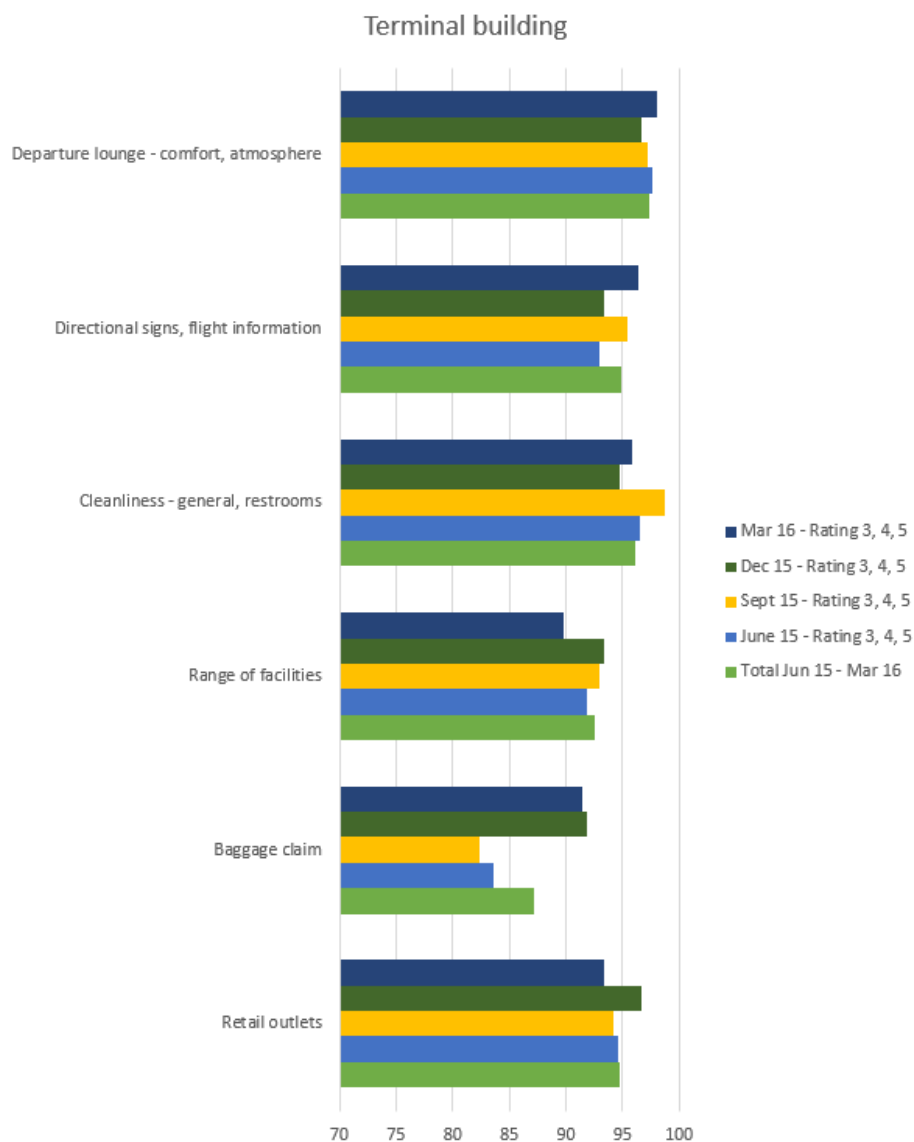
The survey looks at key indicator areas of the Airport. The charts below show the show the percentage of respondents rating their airport experience as excellent, good or average across a range of services at the airport over a period of time.

The charts below show ratings of the previous seven survey rounds and rolling average and the percentage of respondents rating each indicator as average or better (rating 3 plus out of 5);

The charts have been split into key passenger experience areas at Hobart Airport.

### Customer Satisfaction Survey –undertaken February 2016





### III) Handling of complaints

Hobart Airport targets a 100% response rate for handling of customer complaints. This is not always achievable due to the way in which passengers deliver their complaints, with a number electing not to provide contact details. For those providing contact details all complaints were responded to.

### IV) Notifiable quality of service issues

A notifiable quality of service issue is triggered when, in a given period, the number of complaints on a quality of service theme is equal to or greater than 0.1% of passenger throughput. Where this occurs, the Airport has 60 days to notify the Commonwealth Department of Infrastructure of the quality of the issue and provide details of corrective action being undertaken to address the quality of service issue.

There was no notifiable quality of service issues during the reporting period.